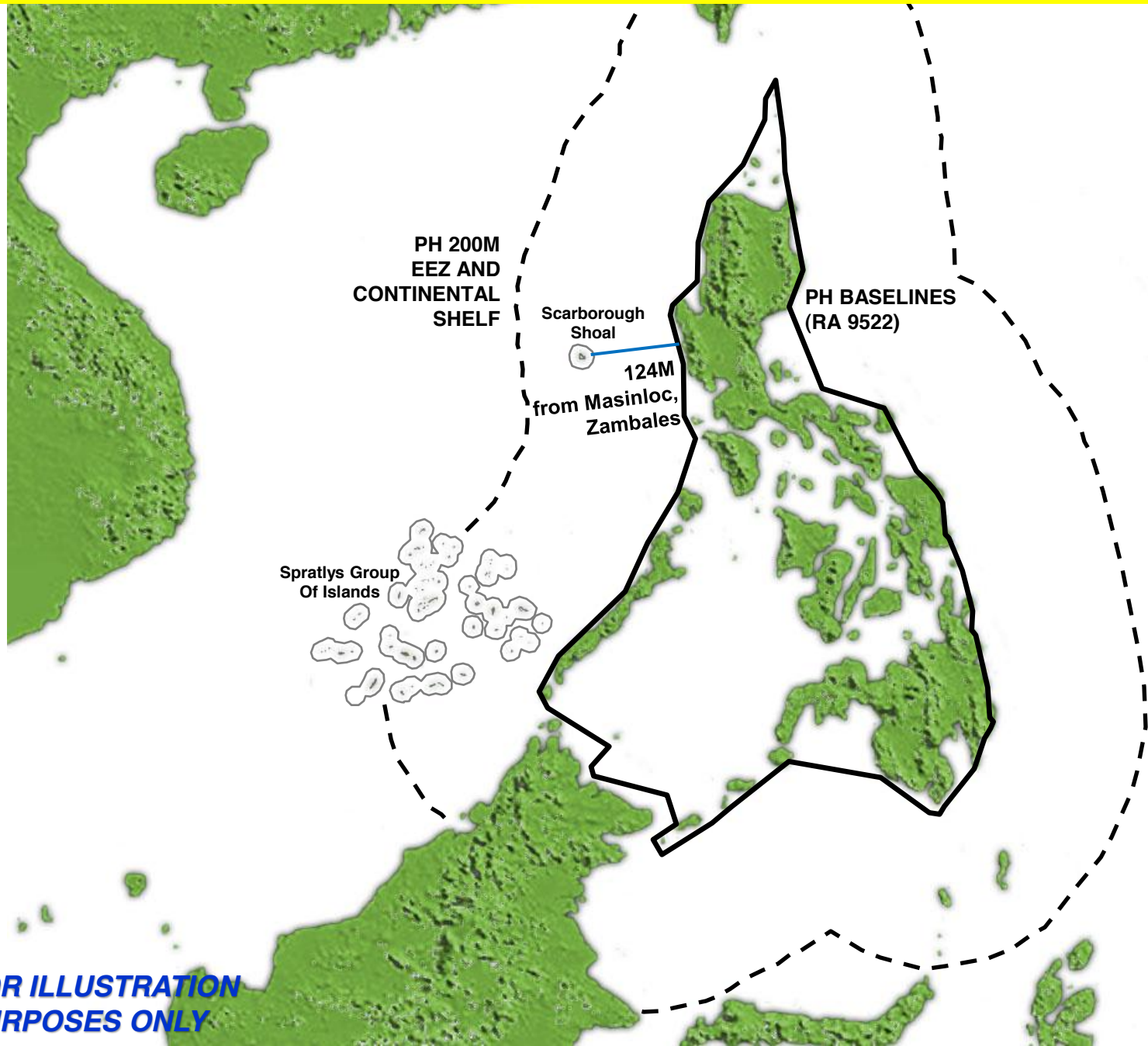


The background features a large, faint watermark of the Philippine coat of arms. It consists of a shield with a sun in the center, a star at the top, and a banner at the bottom that reads "REPUBLIC OF THE PHILIPPINES".

# **DEVELOPMENTS IN THE WEST PHILIPPINE SEA**

25 JUNE 2012

# I. BAJO DE MASINLOC (SCARBOROUGH SHOAL)



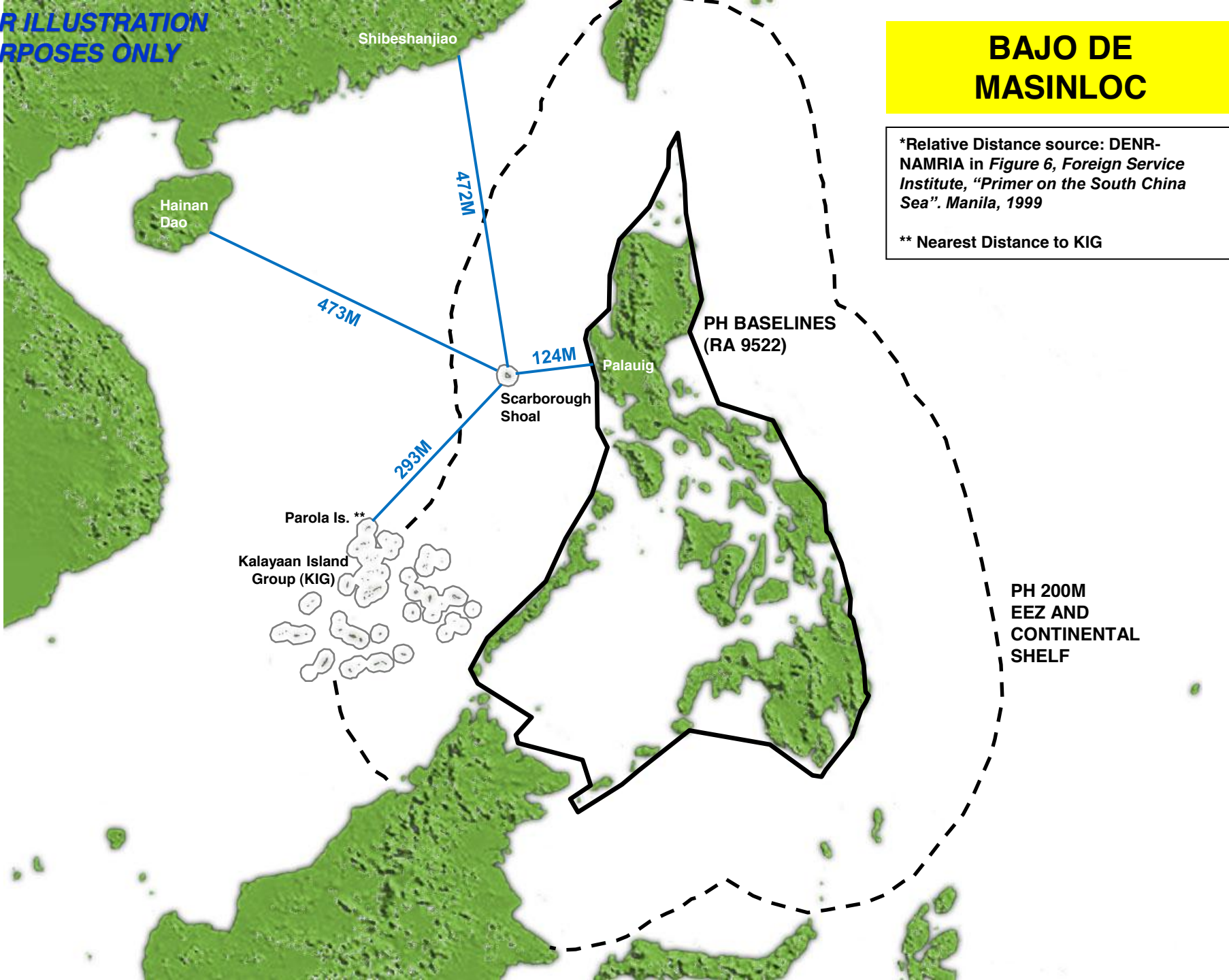
**FOR ILLUSTRATION PURPOSES ONLY**

FOR ILLUSTRATION  
PURPOSES ONLY

# BAJO DE MASINLOC

\*Relative Distance source: DENR-NAMRIA in Figure 6, Foreign Service Institute, "Primer on the South China Sea". Manila, 1999

\*\* Nearest Distance to KIG



## II. MYTHS ON THE WPS (SCS) TENSION

---

**Amid the Bajo de Masinloc stand-off, several myths were generated:**

- **Tension in the South China Sea was allegedly caused by Philippine articulation (Philippine policy shift: *Arroyo vs. Aquino Administration*)**
- **Chinese aggressive policy in the WPS (SCS) is caused by the transition in Chinese leadership**

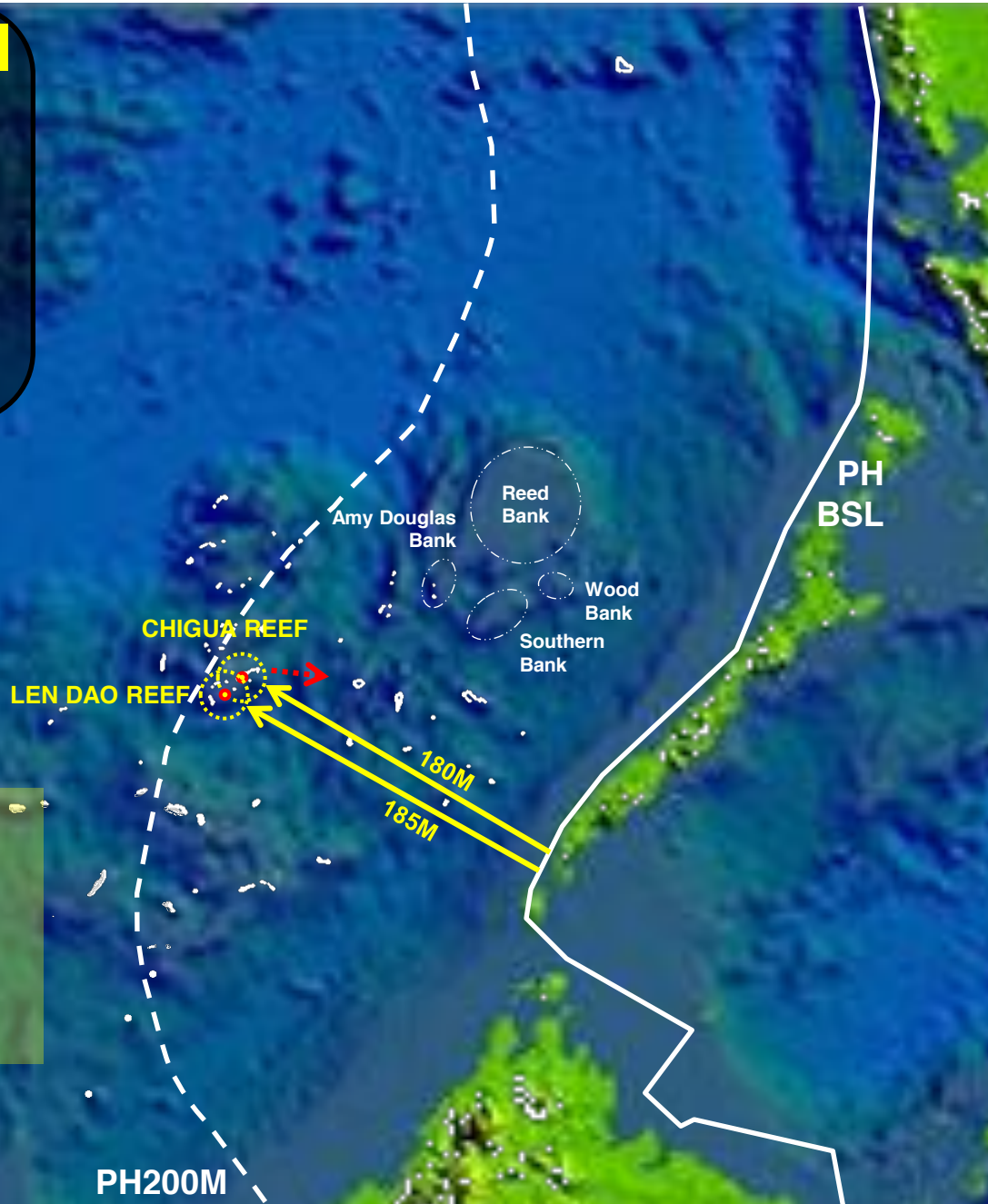
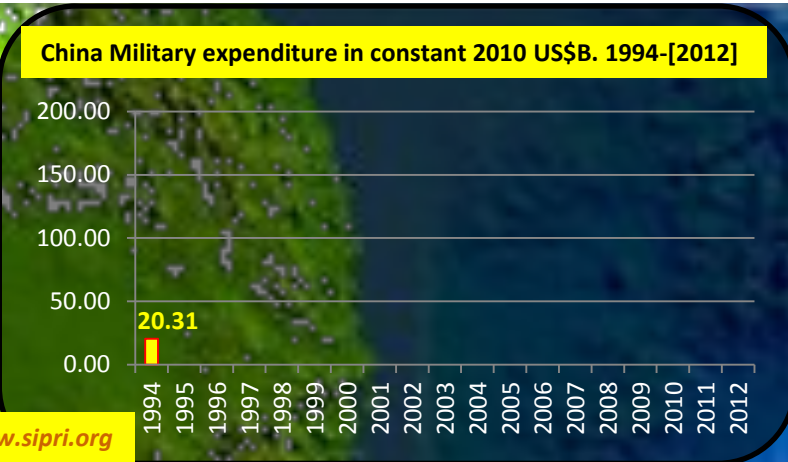
## II. MYTHS ON THE WPS (SCS) TENSION

---

- **The problem in the WPS (SCS) is not the tension *per se*. The tension is caused by something. Therefore, the source which causes the tension is the real problem in the WPS (SCS)**
- **The source of the tension is not the articulation of the Philippines.**
- **The Philippines is articulating because it feels the tension, and that tension is being brought right into its doorstep.**



# III. CAUSE OF TENSION : CHINA'S CREEPING ASSERTION



- Prior to 1995, China was in **CHIGUA & LEN DAO REEF**, which is about 185M from Palawan

FOR ILLUSTRATION PURPOSES ONLY

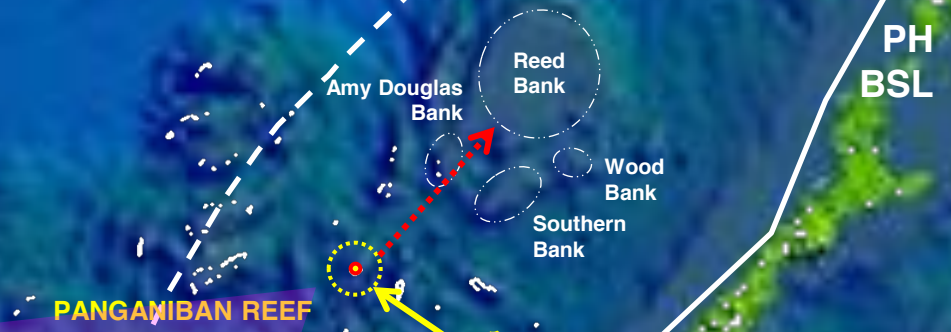
# III. CAUSE OF TENSION : CHINA'S CREEPING ASSERTION

China Military expenditure in constant 2010 US\$B. 1994-[2012]



www.sipri.org

**China Occupies Panganiban/  
Mischief Reef**  
*1995*



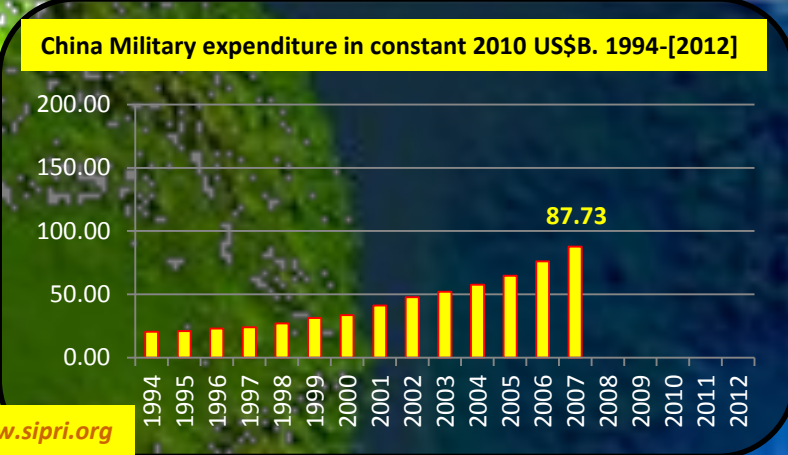
• By 1995-98, China was in **PANGANIBAN REEF**, about 130M from Palawan

FOR ILLUSTRATION PURPOSES ONLY

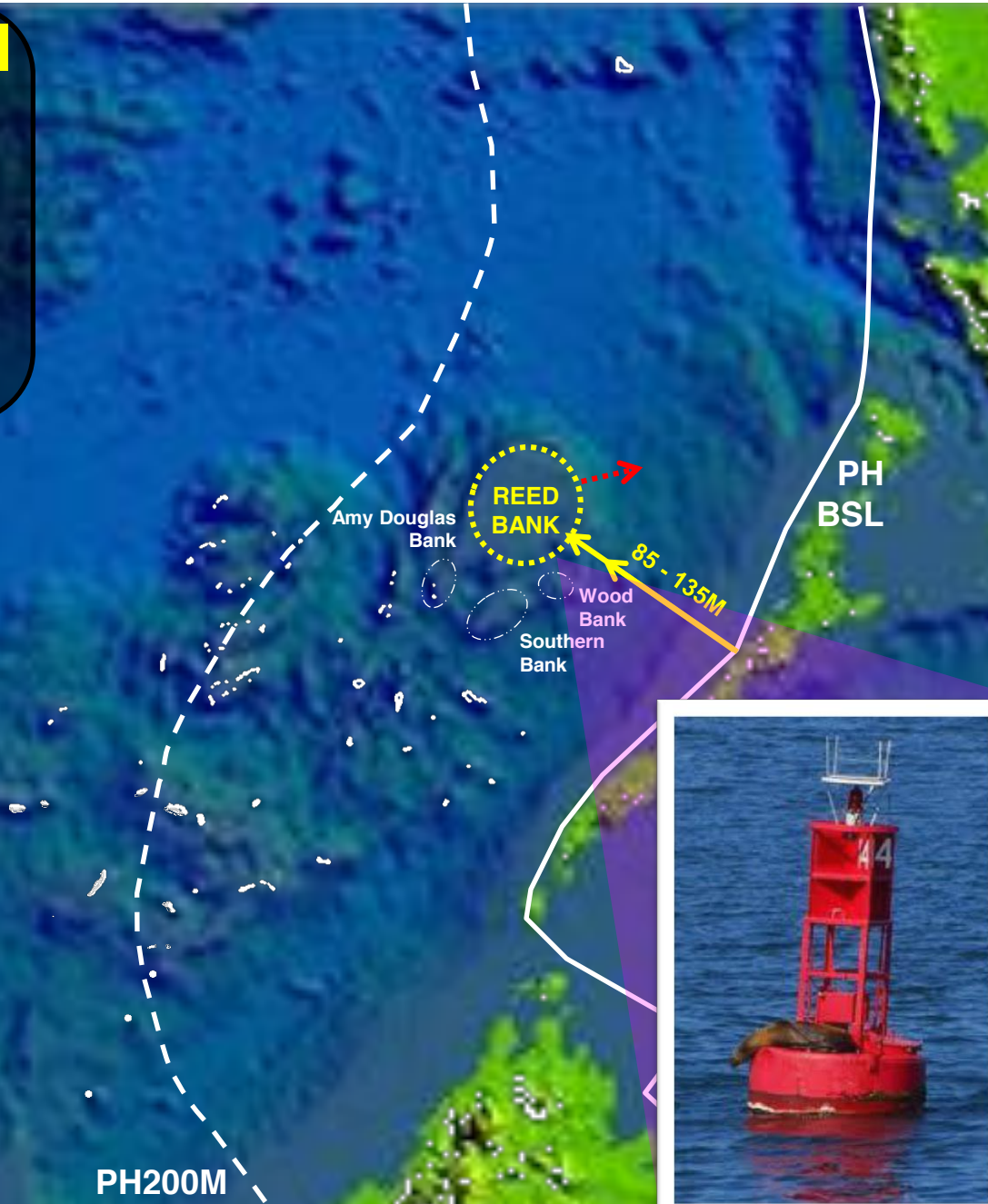
PH200M



# III. CAUSE OF TENSION : CHINA'S CREEPING ASSERTION



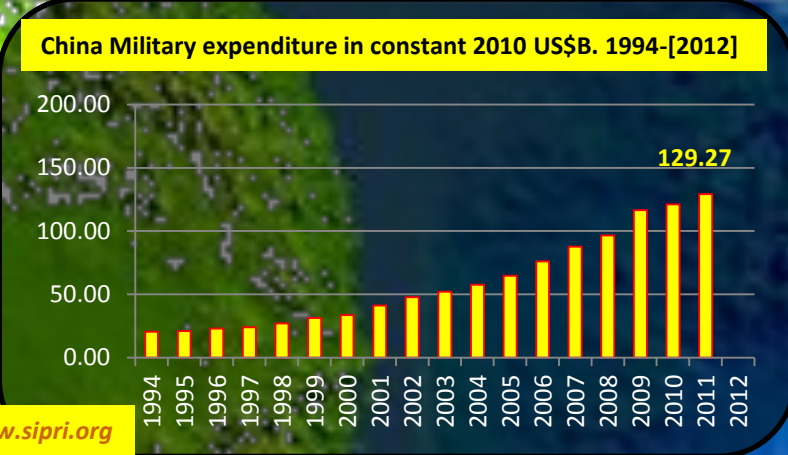
- By 2010, China was asserting sovereignty over **RECTO BANK**, about 85M from Palawan



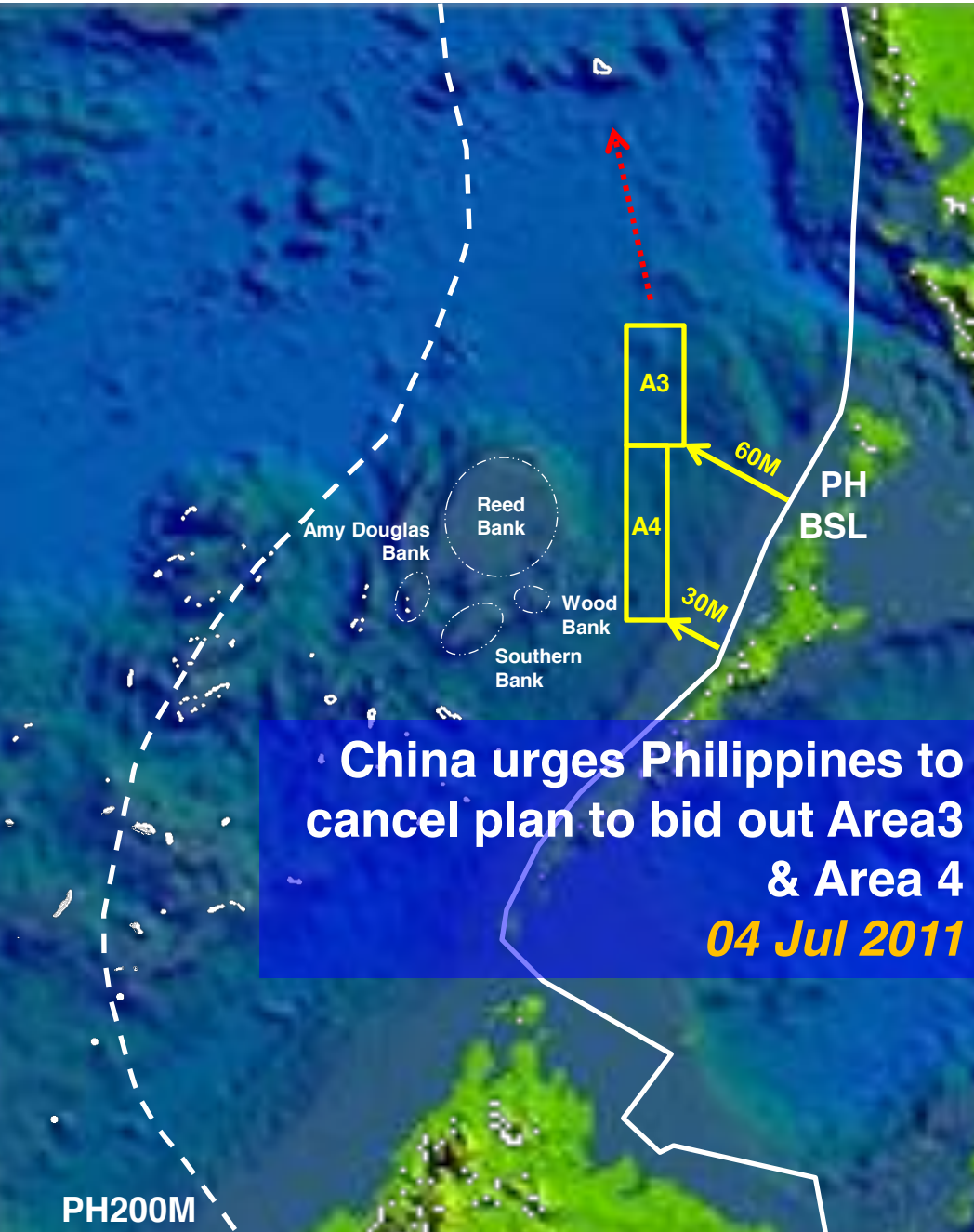
FOR ILLUSTRATION PURPOSES ONLY



# III. CAUSE OF TENSION :CHINA'S CREEPING ASSERTION



www.sipri.org



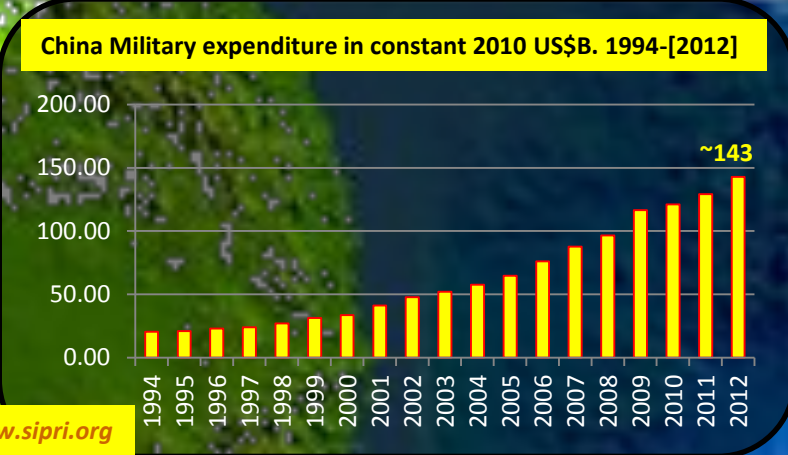
• By 2011, China was on **AREAS 3 & 4**, about 30 & 60M, respectively, from Palawan

China urges Philippines to cancel plan to bid out Area3 & Area 4  
*04 Jul 2011*

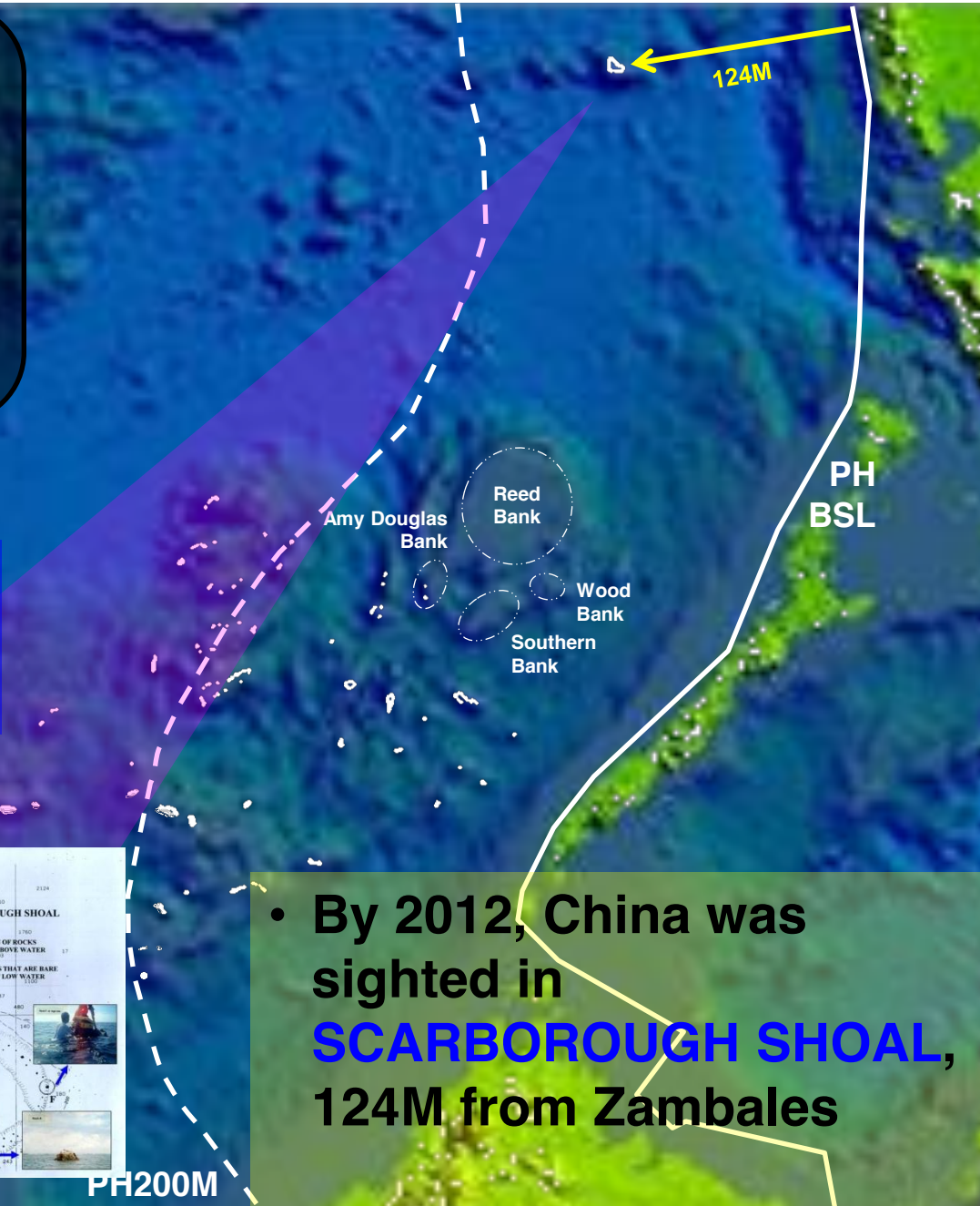
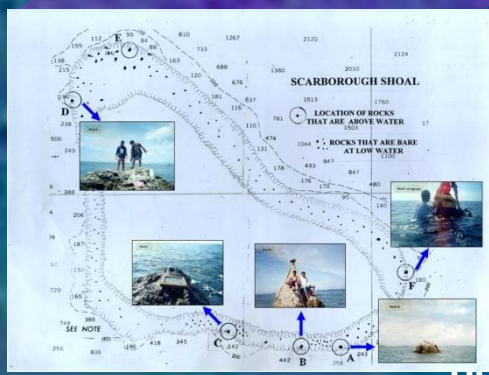
FOR ILLUSTRATION PURPOSES ONLY

PH200M

# III. CAUSE OF TENSION : CHINA'S CREEPING ASSERTION



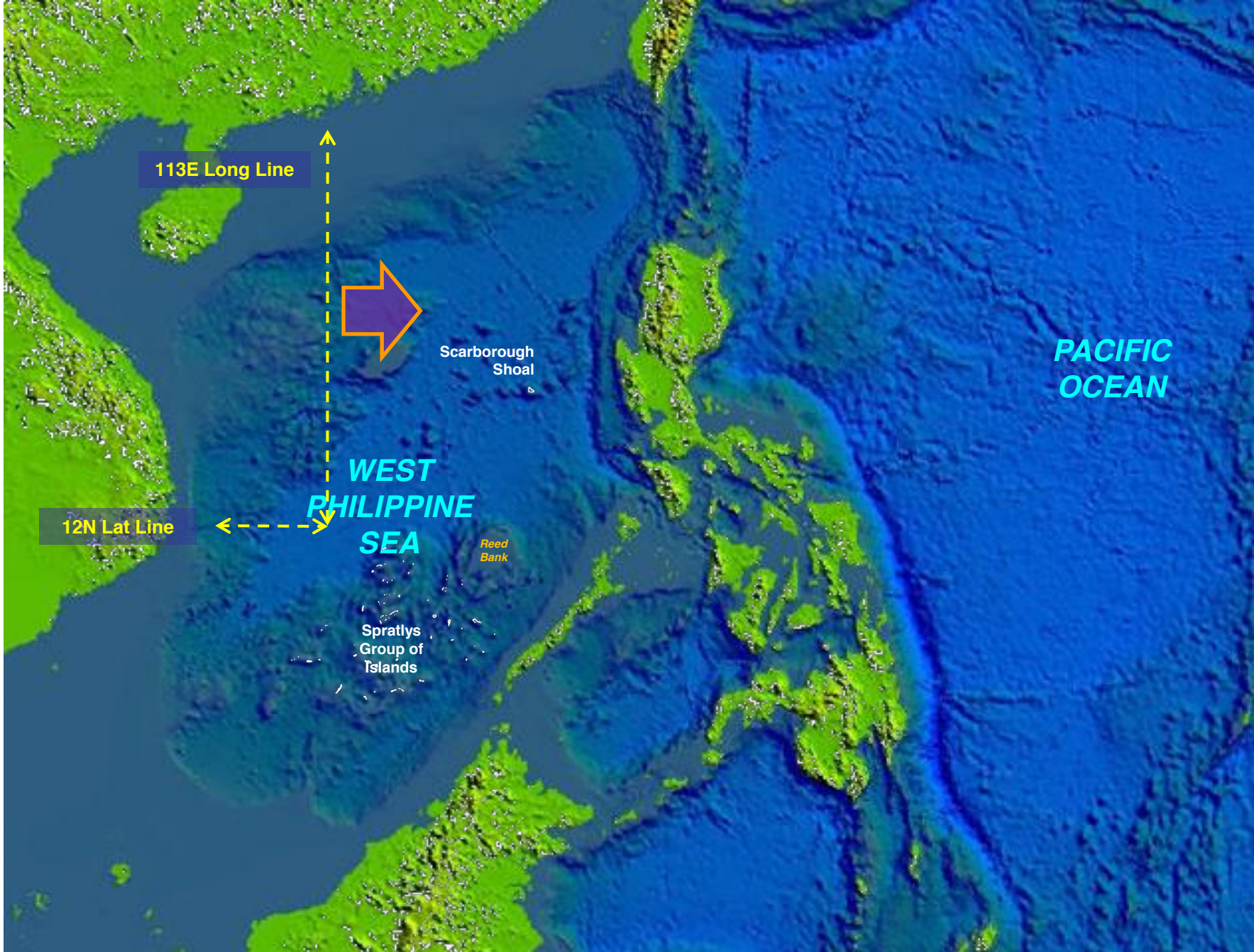
**Philippines-China Stand-off in Bajo de Masinloc**  
*April 2012*



- By 2012, China was sighted in **SCARBOROUGH SHOAL**, 124M from Zambales

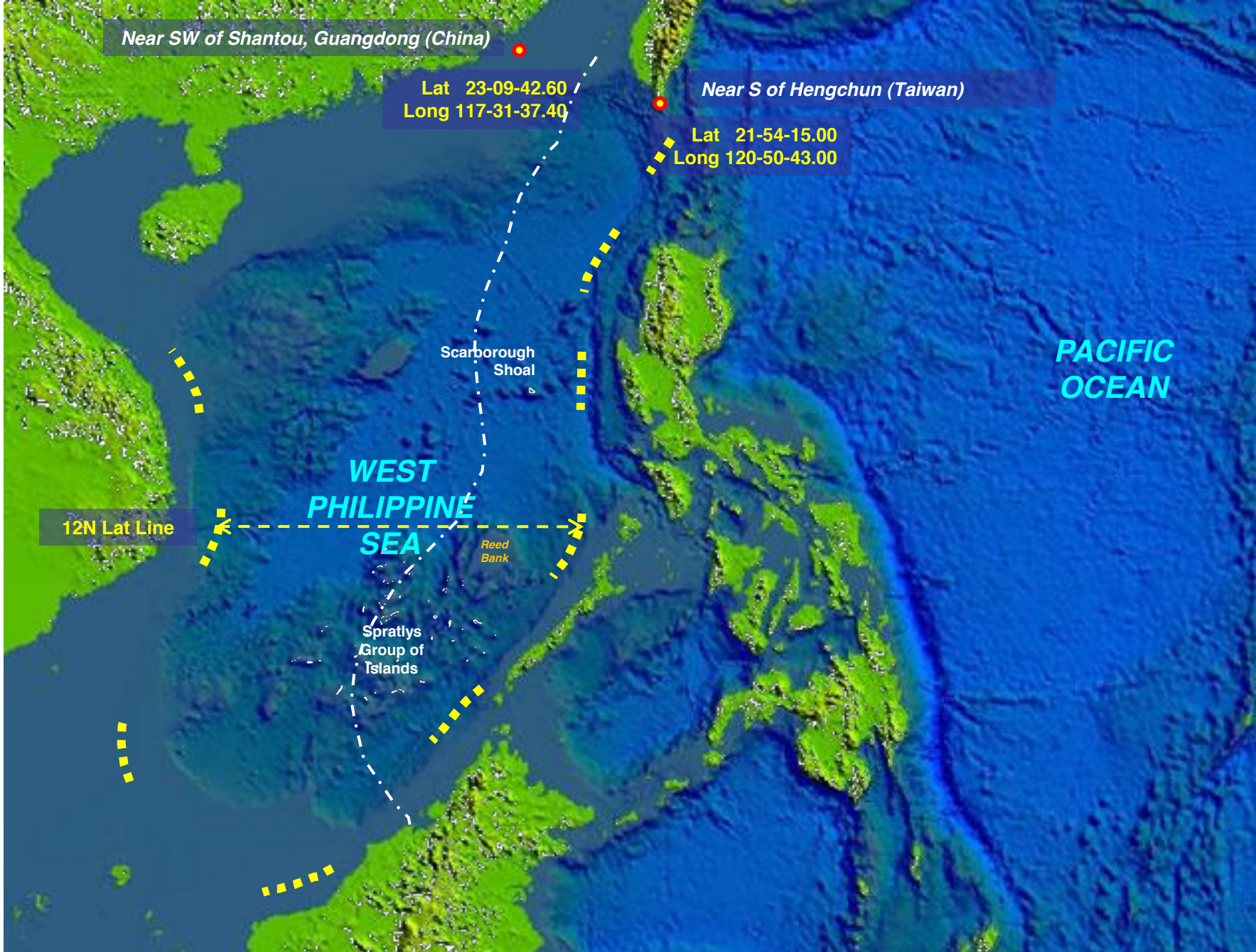
FOR ILLUSTRATION PURPOSES ONLY





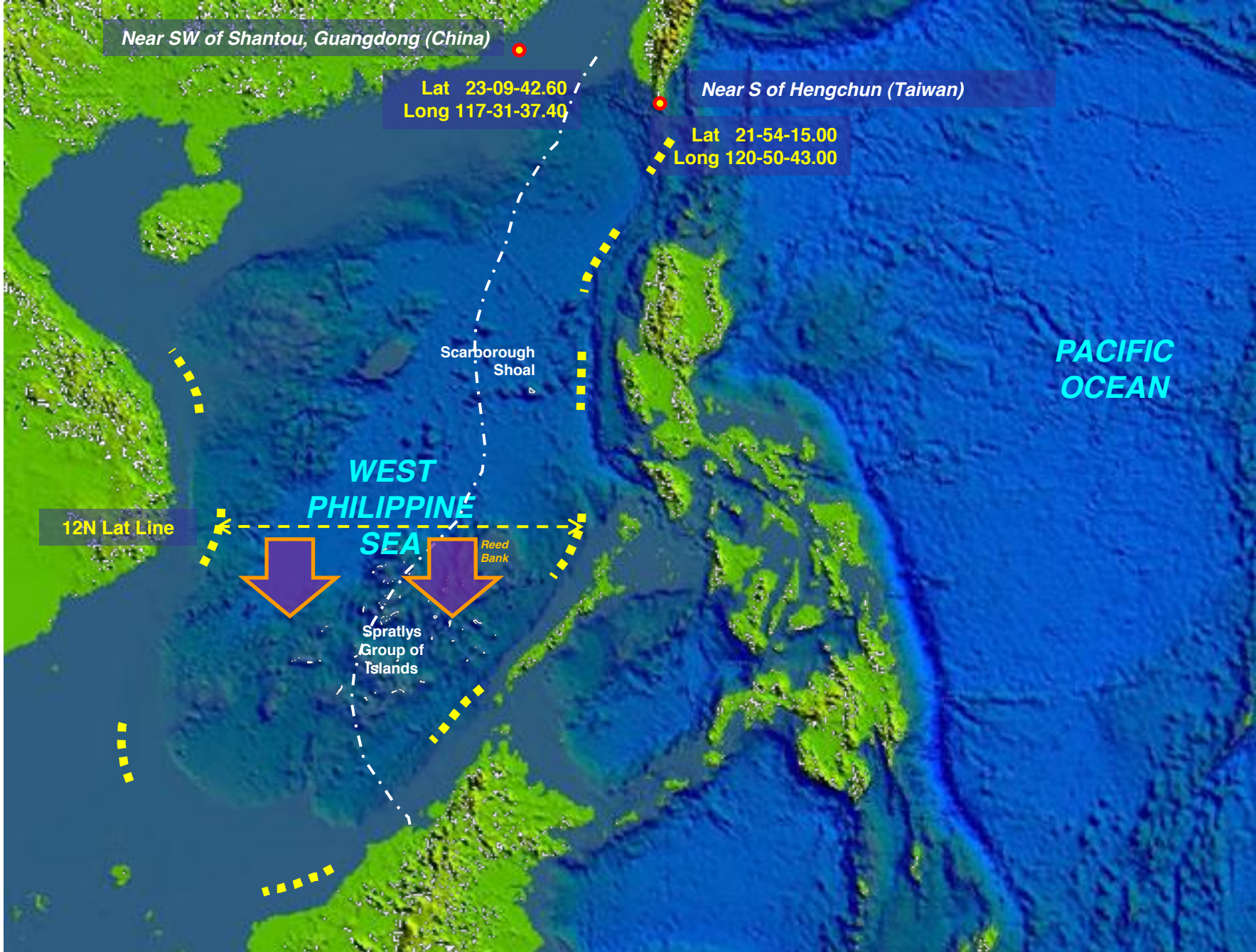
### III. 2011 CHINA FISHING BAN (QUADRANT 1)





**III. 2012 CHINA FISHING BAN (QUADRANT 1 + QUADRANT 2)**





Near SW of Shantou, Guangdong (China)

Lat 23-09-42.60  
Long 117-31-37.40

Near S of Hengchun (Taiwan)

Lat 21-54-15.00  
Long 120-50-43.00

Scarborough Shoal

PACIFIC OCEAN

WEST PHILIPPINE SEA

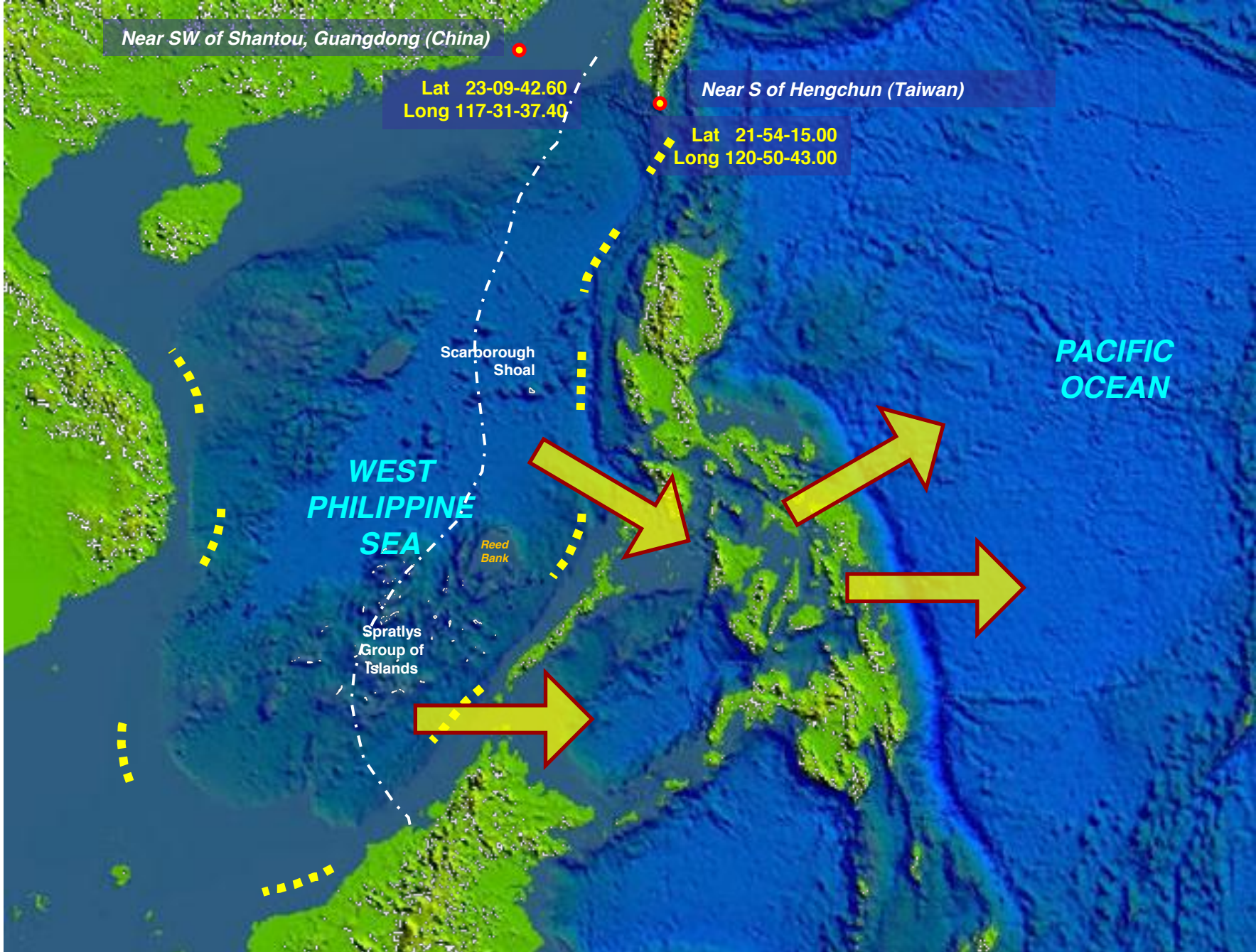
12N Lat Line

Reed Bank

Spratlys Group of Islands

### III. EXPANDED CHINA FISHING BAN? (Q1 & Q2) + (Q3 & Q4)?

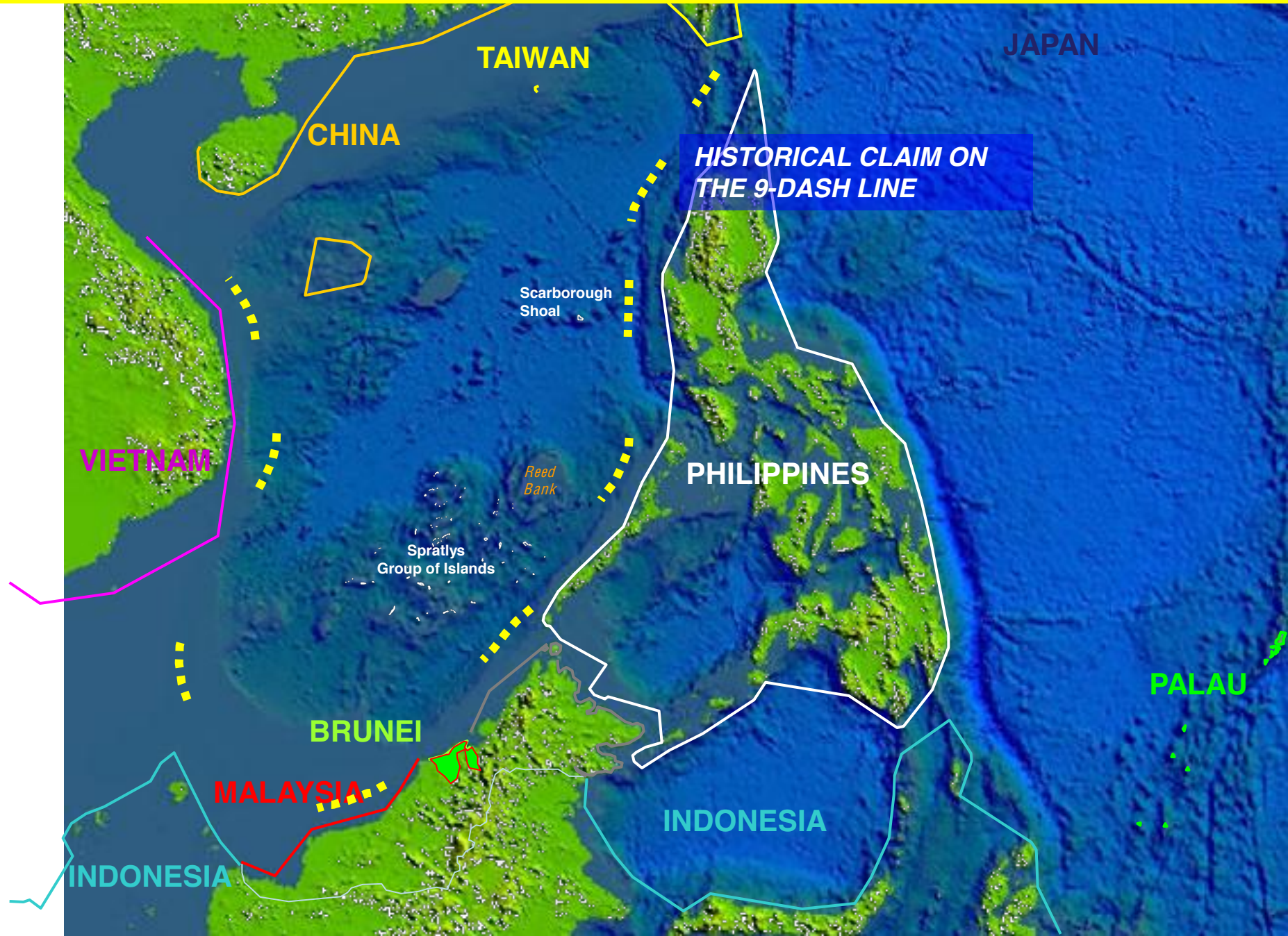




### III. PASSAGE THROUGH PHILIPPINE WATERS?

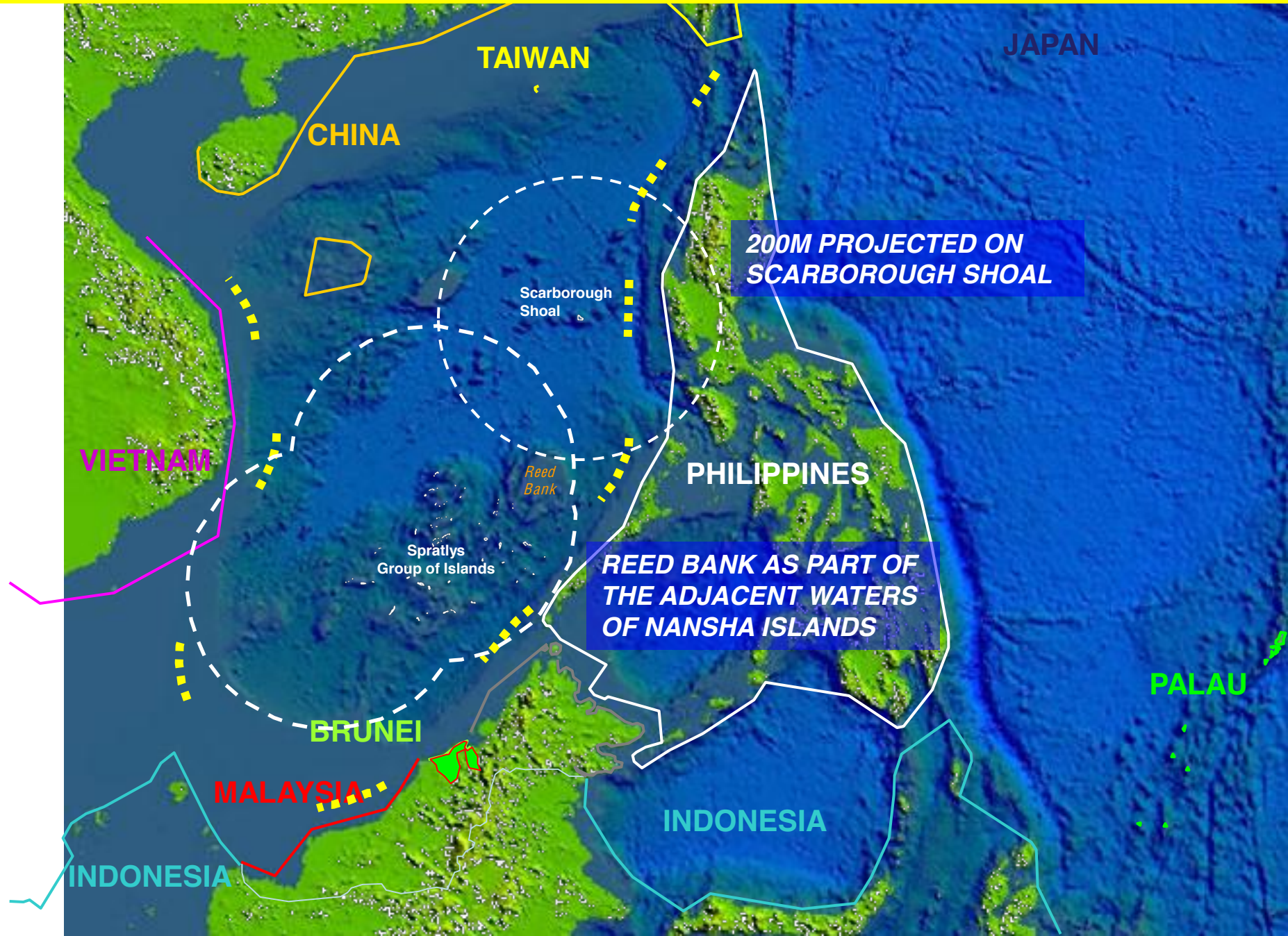


# IV. CHINA STRATEGY: WATER GAIN USING 9-DASH LINE



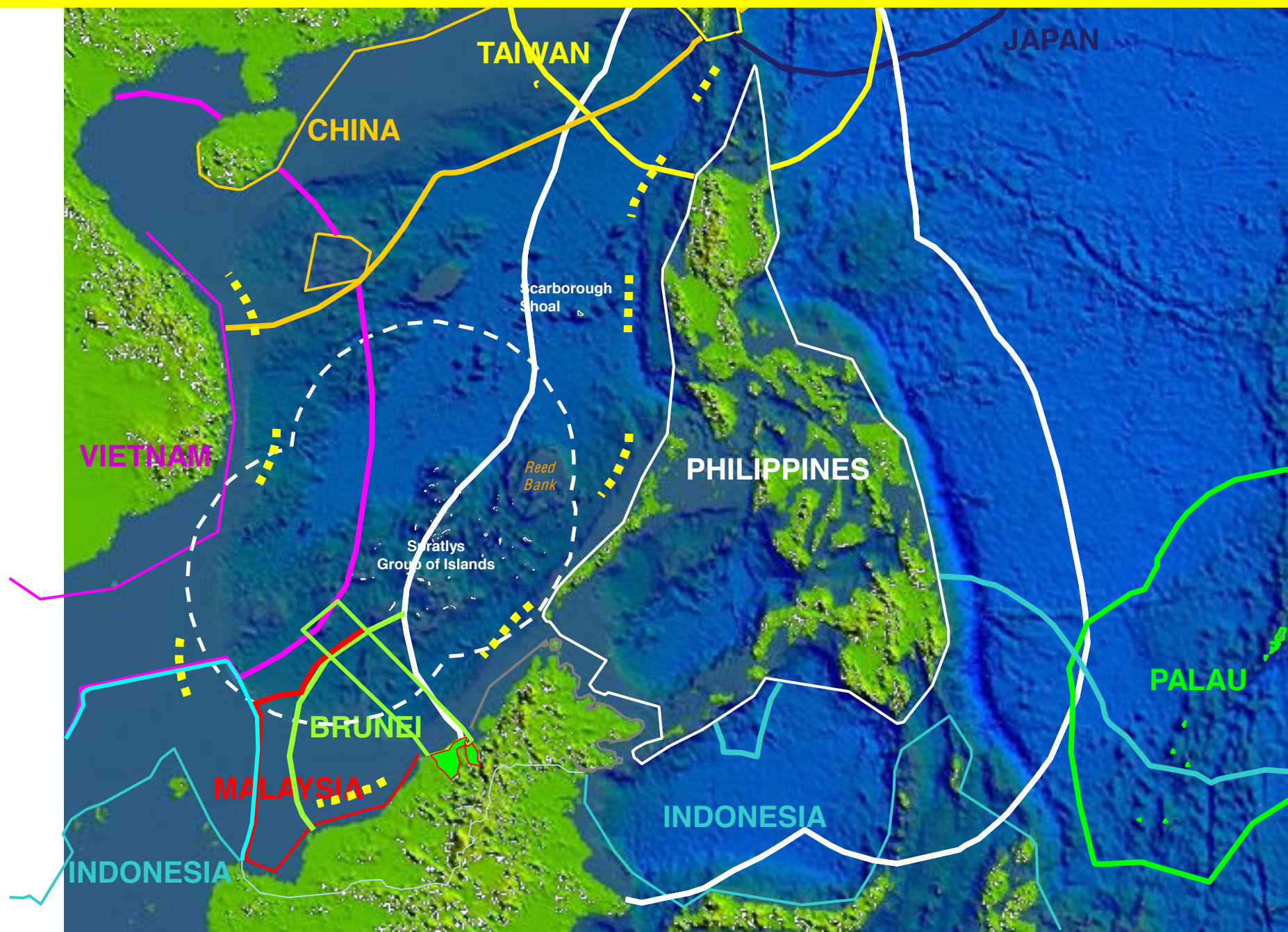


# IV. CHINA STRATEGY: FULL 200M EEZ IN SCS FEATURES



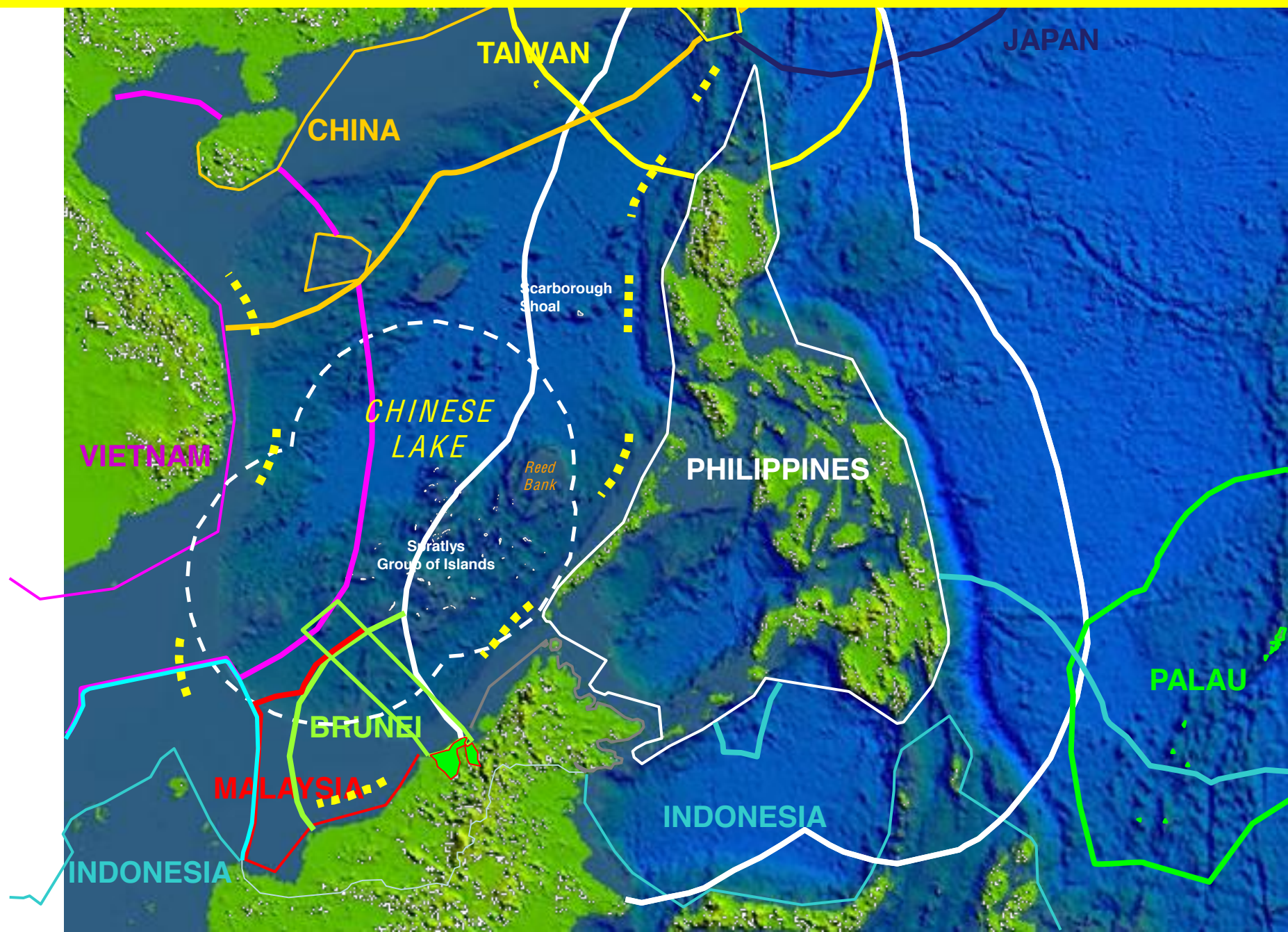


# V. CONCLUSION – SCENARIO 1



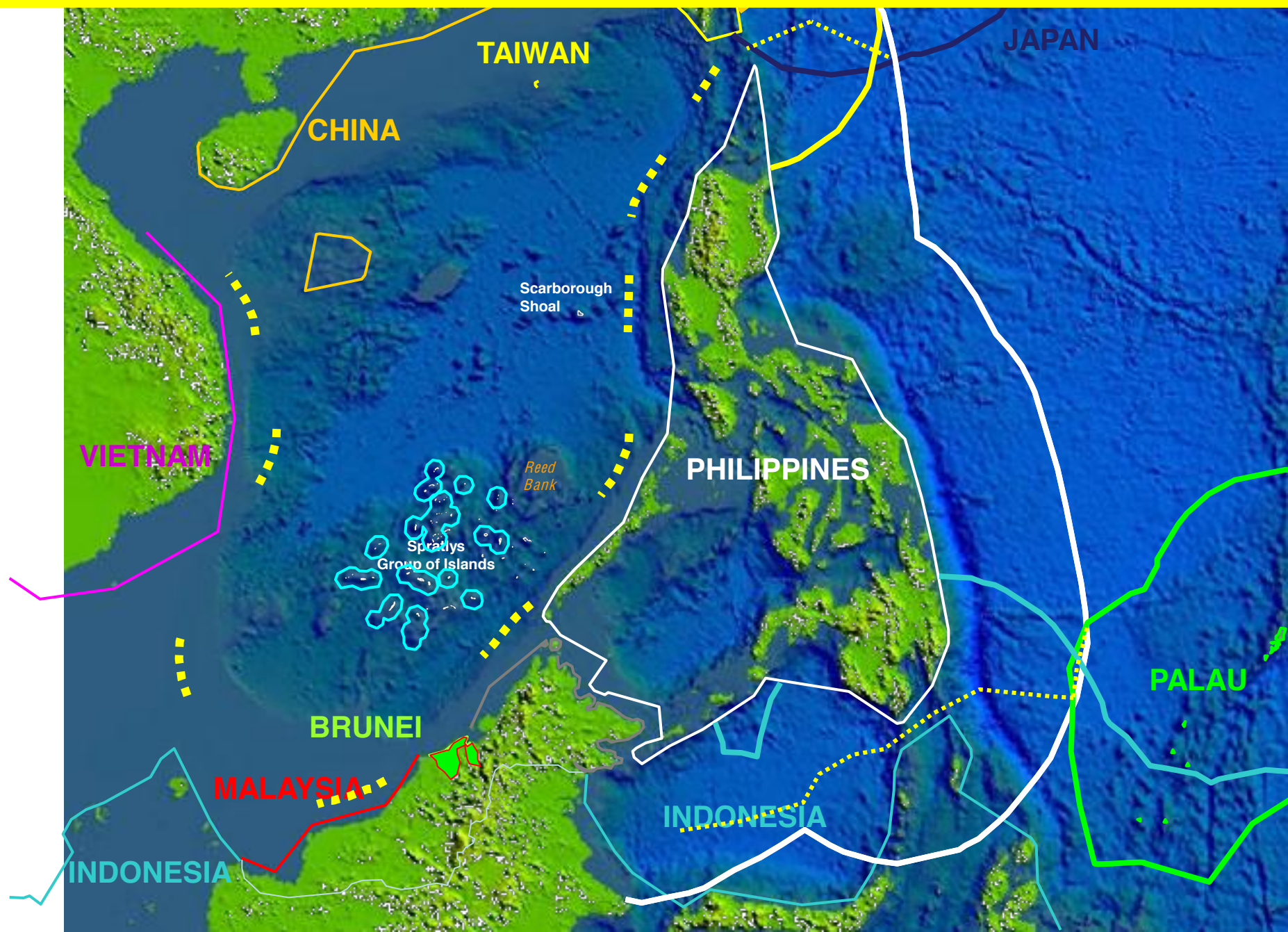


# V. CONCLUSION – SCENARIO 2



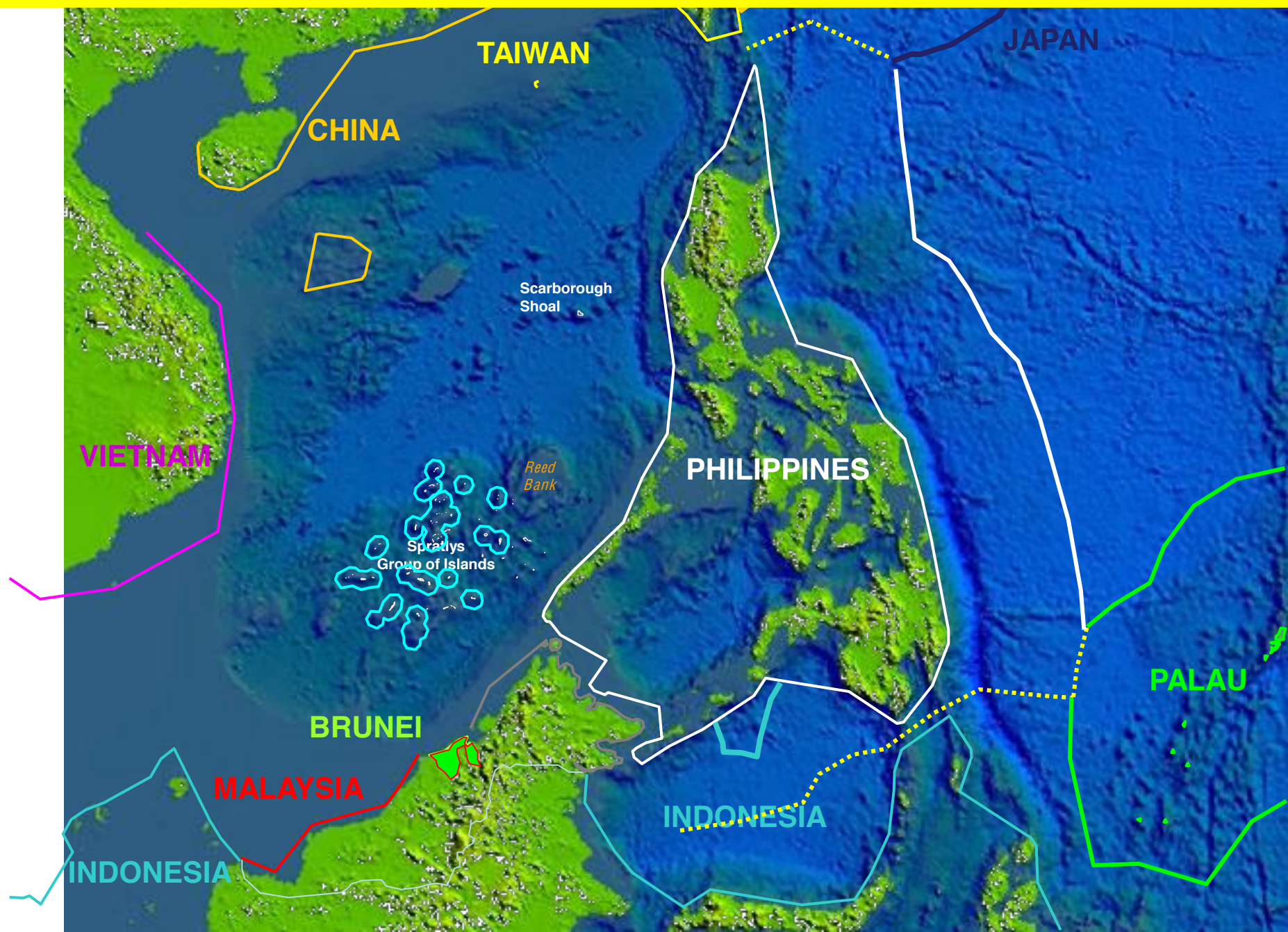


# V. CONCLUSION – SCENARIO 3





# V. CONCLUSION – SCENARIO 3





**DEVELOPMENTS  
IN THE  
SOUTH CHINA SEA**

**END OF PRESENTATION**

25 JUNE 2012